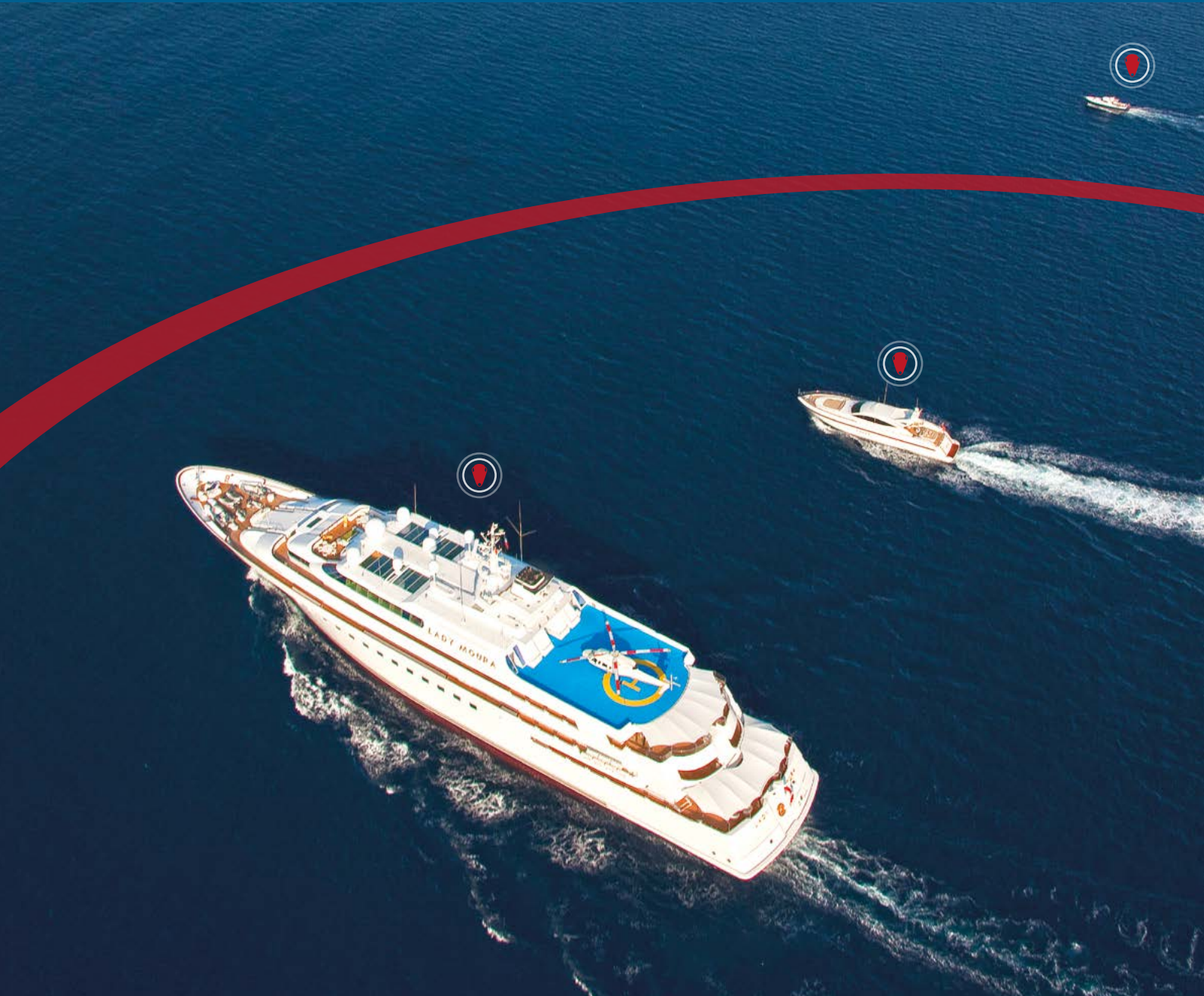


ProteGear® TenderTrack

100 % Global. Real-Time. Monitoring. Safety. Rescue. Communication.



100% Global Coverage
all networks: GSM
LTE BLE GPS Iridium-Sat



Automatic Safety
early awareness and
dead-man switch



Dynamic Geofences
automatically roaming
with the main vessel



Real-Time Tracking
share tracks and
see team live



Globally Connected
send, receive email, sms
and more - anywhere



Only 10% of the earth
is covered by cellular networks.

Only 10% of the oceans
are covered by AIS.

We give you the missing 90% on top.
Real-Time. At one rate.



ProteGear
Far Out & Still Safe

powered by  **iridium**
Everywhere

ProteGear TenderTrack

The 100 % Global Real-Time Auto-Monitoring System with Globalmail & Rescue Navigation



The only system that works globally & automatically. Real-time monitoring including speed, distance, tracking history and much more. Automatic warning with safety zones, preconfigured routes or customized alarm-scenarios. Automatic Always-On-Activation.



100% global at one rate.

No black out zones or fringe areas worldwide. Track your vessels wherever they are.



Real-Time Monitoring with Auto-Notifications

via App, SMS, Email, API and Rescue Navigation for one or many vessels at one glance. Replay included. Inbound & Outbound API to connect to your systems.



Roaming Dynamic Geofences

move and center automatically around your main vessel.

ProteGear Roaming Geofences keeps track of your main ship; so you dont need to adapt any geofences while you are moving



Automatic Safety: Dead-man switch

with 3 levels of alarm & warnings and manual SOS calls: DEADMAN, HALT, ZONE, CRASH, PAUSE, REST, HEIGHT. Anchor alarm, Route-control, roaming Geofences and much more.



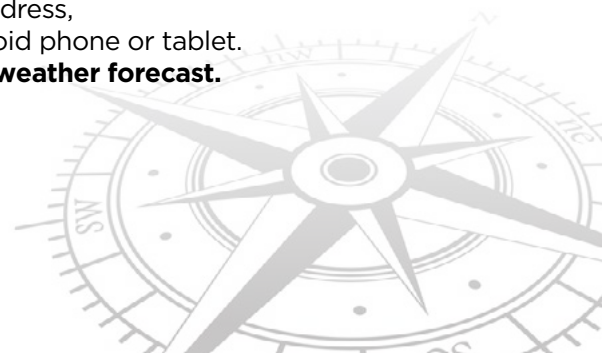
Fast & Accurate Rescue Navigation

Find everyone even in difficult situations. Reduces rescue response times by 90%.



Global 2-way communication (Email & SMS)

Each ship has its unique email-address, usable also with any iOS or Android phone or tablet. Including **auto-localized marine weather forecast.**



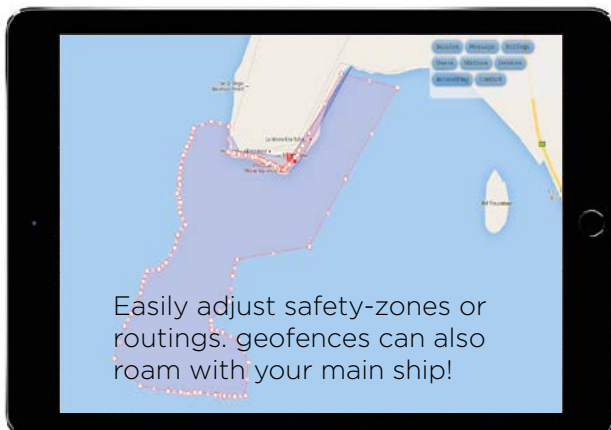


ProteGear TenderTrack

All-Oceans Monitoring + SmartSafety

Key Features

- 100% global operation with GPS, GSM and Iridium satellite systems
 - Real-Time tracking with intervals from 1 - 60 sec (GSM) or 1 - 30 minutes (Satellite)
 - Monitoring app runs on all PCs, Macs, tablets, smartphones
- You don't need to be online: fully automatic status updates also via SMS, email, API
- Connect to your own systems by REST-API or webhooks
- Even works without or unstable Internet connections at monitoring site
- Provides manual SOS button for global rescue operations
 - Choose between global rescue coordination (GEOS) or your own rescue chain
- Provides fully-automatic surveillance (deadman-switch) with 3 different warning-levels for anti-theft-control, anchor alarm, course control and more
- Controls movement, geofencing, non-connected states and more
- Roaming geofences* stay with the main ship while moving
- Logging of distance, routing, average/maximum speed and historical tracks
- TimeLine: Do a replay of your daily or other historical trackings
- GlobalMail*: unique email address, can be used with any iOS/Android device
- Includes auto-localized marine and high-resolution weather-forecast
- All-In-One: hardware, software, setup & maintenance for one-button-operation
- Flexible DataPlans: switch to standby when you don't need it
- Device 100% waterproof (IP67), inductive charging (Qi), operates up to 100h
- Optional satellite-based RescueNavigator available *available late 2017



optional
RescueNavigator

ProteGear TenderTrack

How it works



Stay Connected, Stay Safe.


You don't need to be online:
All alarms will be sent automatically by SMS, email, API and Rescue Navigation to standard rescue facilities or your individual rescue chain, friends or team.

Statistics for each session

With "Full information" you can see statistics of the current session, with states, notifications, speed, altitudes and more.

Status of each session/user

Right column lists all devices and its current status, alarms and last messages as well as track of the last 24 hours


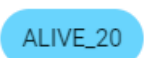





Current position of monitoring device



Send help
You can also initiate manual Rescue Navigation

Pins & Status

-  **ALIVE_35** All fine! Device is "OK"
-  **ALIVE_20** Tracking has been paused/stopped on purpose or device is in REST-zone
-  **ALIVECL1** Tracking has been paused/stopped on purpose, but HALT or second DEADMAN timeout alarms are up.
-  **CL3** Pre-Warning. Battery Low
-  **CL1** Automatic or Manual alarm activated. Help needed!



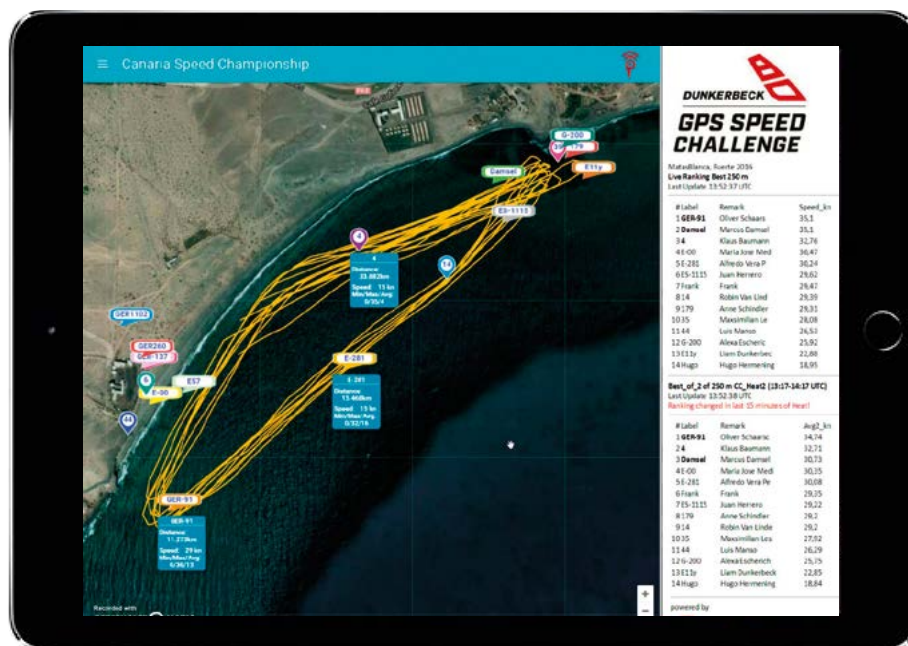
Extra Service included: ProteGear LiveEvent & LiveRanking

The Competition System for Web & TV
with live updated course borders

See and rank how fast they are – for big competitions and daily challenges

LiveRanking for best 250 m, 500 m, nautical mile (or any other distance)
Personal KML file for analysis sent out by email automatically every day

- Real-Time coverage (Iridium: 60 sec / GSM-3G: 1 sec interval)
- View additional information & statistics on demand
- Graphical display of tracking history
- LiveRanking: automatic ranking lists based on customized rules
- Automatically updated race-course-borders (e.g. with moving buoys)
- TimeLine: Do a replay of your daily or other historical trackings
- Automatic KML export of routes with best & 2nd best course for analysis
- Upload & connect tracker data from various sources through REST-API
- Use for web-stream, mobile, tablet, TV, include in your own website
- Remote control and support included and much more



References & Awards for ProteGear

- Awarded ISPO BrandNew Finalist 2016
- Awarded OUTDOOR Industry Award Finalist 2017
- Already in use since 2014 by more than 300 customers, groups & institutions



ProteGear®

Global Safety
Tracking Solutions